



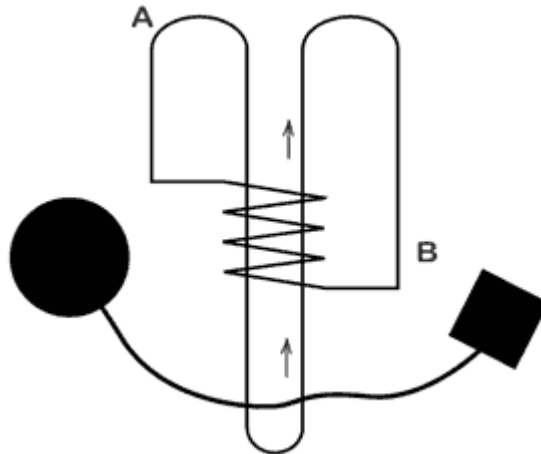
IQ Collection™

Brain Spiral



REMOVE THE CORD, BLOCK, AND BALL FROM THE PUZZLE.

- 1 • Hold the block and ball apart at equal lengths with the center of the cord looped over the bottom "U" bar of the puzzle, as shown. Push the center loop of the cord up through the center of the spiral and then over Loop A.
- 2 • Holding the block and ball together and pulling downwards, rotate the loop of the cord along the spiral, keeping the two parts of the cord together.
- 3 • When the loop of the cord reaches the bottom of the spiral, it slides onto loop B. Pull on the cord.
- 4 • The cord, block and ball are now free. Reverse to reassemble.



Difficulty level 3 - Hard

AVAILABLE PUZZLES

Brain Game
Brain Spiral
Brain Baffler
Brain Bender
Brain Buster
Handcuff
The Rack
Scorpion
Cowboy's Hobble
Scorpion Sting
Yield
Mental Maneuver
Sproing
Cranial Key
Lobotomy
Brain Burden
Heart Breaker
A' Puzzle
Black Widow
Mirror Image
Parallel Dimension
Beetle Bug
Iron Maiden
Fantastic Five

Manufactured and distributed by:

Family Games America FGA Inc. Montreal, Quebec, Canada www.familygamesamerica.com

Under license from Family Games America FGA Inc. © 1999 – 2005